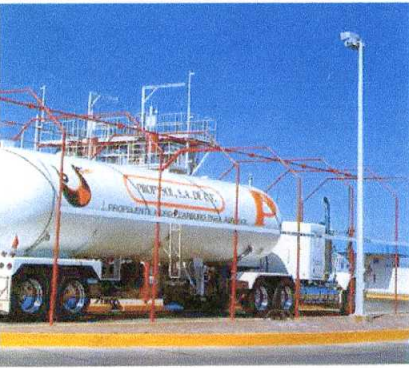
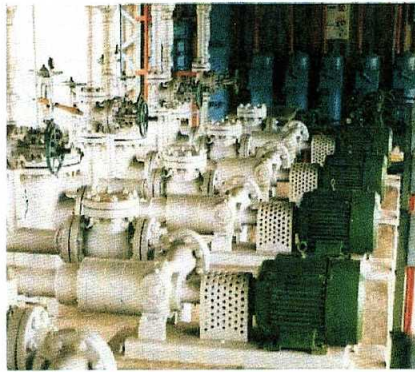


SMITH PUMPS

"Success through Quality"

AL-36
(BOOKLET A)
(Rev. E)

HANDLING LIQUEFIED GASES EFFICIENTLY WITH POSITIVE DISPLACEMENT PUMPS



AMERICAN INTERNATIONAL
REGISTRARS CORPORATION

SMITH PRECISION PRODUCTS COMPANY

P.O. Box 276, Newbury Park, CA 91319 USA

1299 Lawrence Drive, Newbury Park, CA 91320 USA

Tel.: 805/498-6616 FAX: 805/499-2867

e-mail: SMPUMP1299@aol.com web: www.smithpumps.com



TABLE OF CONTENTS

Subject	Page	Subject	Page
Back-pressure build-up in customer tanks		Pumps, general (continued)	
being filled (table)	22	choice of best	1
Bypass valves		design, importance of	1,2
general	3	initial cost, importance of	2
hand	4	long run cost, importance of	2
installation	4	operation, importance of	1
selection	3	Resistance to flow	
setting	4	of consumer tank filler valves (table)	22
Delivery hose, resistance to flow of	15, 22	of delivery hose (table)	22
Discharge line for pump, sample calculation	22	of extra heavy (Sch. 80) steel pipe (table)	18
Equalizing lines, pressure	22	of globe valves in discharge line (table)	22
Filler valves, resistance to flow of (table)	23	of meters (table)	21
Flow-limiting safety valves	2	of pump	19
Hand operated bypass valves	4	of valves and fittings (table)	18
High capacity pumps		Slow speed pumps	
discharge line pressure drop	23	discharge line pressure drop	14,17,19,21
general	10	general	11
installation, importance of	10	heat action upon, importance of	11
Hose end swivel connectors	16	piping design	12
Hydraulic drives for truck pumps	13, 17	piping recommendations for	12
Inlet line for pump, sample calculation for	19	piping table	12
Internal valves	2, 12, 13	speed (RPM) importance of	11,16
Low capacity pumps		Smith pump application information (tables) 27-29	
discharge line pressure drop	23	Strainers	2,3
general	6	Static Head, inlet line	17,19
installation drawing	7	Tanks, pressure reduction during unloading	25
Medium capacity pumps		Top filling (tanks)	22
discharge line pressure drop	23	Truck pump and mobile system drives	
general	8	flexible shaft	13
installation drawing for	9	hydraulic (hydrostatic)	13
Meters, resistance to flow of (table)	21	universal jointed shaft	13
Pressure reduction in tanks being unloaded	25	V-belt or chain	13
Pumps, general		Vapor return lines	23-24
capacity, reduction in due to design of		Vapor space filling of consumer tanks	12
inlet line (table)	20		

