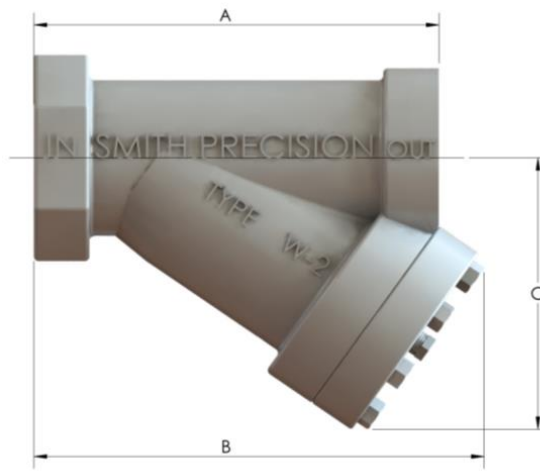


## THE SMITH STRAINER

### A BETTER GRADE OF STRAINER AT A REASONABLE PRICE

- Materials of construction exceed latest safety code requirements. Working pressure of ductile iron body 600 p.s.i. WOG, test pressure 2,000 p.s.i. Your assurance that these strainers will not become obsolete.
- Reducing sizes available (3" x 2 1/2" , 2" x 1 1/2" , etc.). Save cost by using reducing sizes which eliminate steel bushings or extra joint in the pipeline. Results in greater safety and less expense.
- Heavy steel flange opening to strainer screen. May be removed easily with 8" crescent wrench or socket wrench. No large threads to become rusty and freeze up.
- Screen easy to replace due to exclusive narrow guide vane and taper in strainer body. Screen glides into position properly, preventing breakage or buckling which otherwise could allow foreign matter to pass through without user's knowledge.
- Screen is reinforced mesh. Mesh screens trap more foreign matter but have less than half the resistance to flow (pressure drop) of inferior ones made of perforated metal.
- Pipe threads in strainer body are lathe-cut so as to seal perfectly. All Smith Strainers are tested against leakage.
- Semi-permanent O-Ring gasket in strainer flange. This is cheap to replace if necessary. Smith Strainers do not use troublesome metal ring gaskets or types made of composition sheet.
- No large blow-off hole in strainer opening. Save cost and trouble by not having to provide a steel plug at your own expense.
- Strainer body dimensions interchangeable with some other makes (see dimension table on reverse of this sheet).



MODEL	INLET FNPT	OUTLET FNPT	A	B	C	Replacement Screen Part #	Replacement O-ring Part #
W-1-034-034	¾" [DN 20]	¾" [DN 20]	6- 3/8" [162mm]	7" [178 mm]	4- ½" [114 mm]	W-1-3	6230-3
W-1-100-034	1" [DN 25]	¾" [DN 20]	6- 3/8" [162mm]	7" [178 mm]	4- ½" [114 mm]	W-1-3	6230-3
W-1-100-100	1" [DN 25]	1" [DN 25]	6- 3/8" [162mm]	7" [178 mm]	4- ½" [114 mm]	W-1-3	6230-3
W-1-114-034	1- ¼" [DN 32]	¾" [DN 20]	6- 3/8" [162mm]	7" [178 mm]	4- ½" [114 mm]	W-1-3	6230-3
W-1-114-100	1- ¼" [DN 32]	1" [DN 25]	6- 3/8" [162mm]	7" [178 mm]	4- ½" [114 mm]	W-1-3	6230-3
W-1-114-114	1- ¼" [DN 32]	1- ¼" [DN 32]	6- 3/8" [162mm]	7" [178 mm]	4- ½" [114 mm]	W-1-3	6230-3
W-2-112-112	1- ½" [DN 40]	1- ½" [DN 40]	8- 3/16" [208 mm]	9" [229 mm]	6-5/8" [169 mm]	W-2-3	6230-11
W-2-200-112	2" [DN 50]	1- ½" [DN 40]	8- 3/16" [208 mm]	9" [229 mm]	6-5/8" [169 mm]	W-2-3	6230-11
W-2-200-200	2" [DN 50]	2" [DN 50]	8- 3/16" [208 mm]	9" [229 mm]	6-5/8" [169 mm]	W-2-3	6230-11
W-3-212-212	2- ½" [DN 65]	2- ½" [DN 65]	10- ¼" [260 mm]	11- ¼" [286 mm]	7- ½" [191 mm]	W-3-3	6230-20
W-3-300-212	3" [DN 80]	2- ½" [DN 65]	10- ¼" [260 mm]	11- ¼" [286 mm]	7- ½" [191 mm]	W-3-3	6230-20
W-3-300-300	3" [DN 80]	3" [DN 80]	10- ¼" [260 mm]	11- ¼" [286 mm]	7- ½" [191 mm]	W-3-3	6230-20

- All strainer screens are available in 40 mesh brass or 80 mesh stainless steel (denoted with an "A" at the end of the model number and strainer screen part #).
- For LPG, we recommend our 40 mesh brass screen. For CO2, we recommend the 80 mesh stainless steel. For inquiries about screen size/type of liquid, please contact our engineering department.



## SMITH PRECISION PRODUCTS COMPANY

P.O. Box 276, Newbury Park, CA 91319 USA  
 1299 Lawrence Drive, Newbury Park, CA 91320 USA  
 Tel.: 805/498-6616 FAX: 805/499-2867  
 e-mail: [info@smithpumps.com](mailto:info@smithpumps.com) web: [www.smithpumps.com](http://www.smithpumps.com)