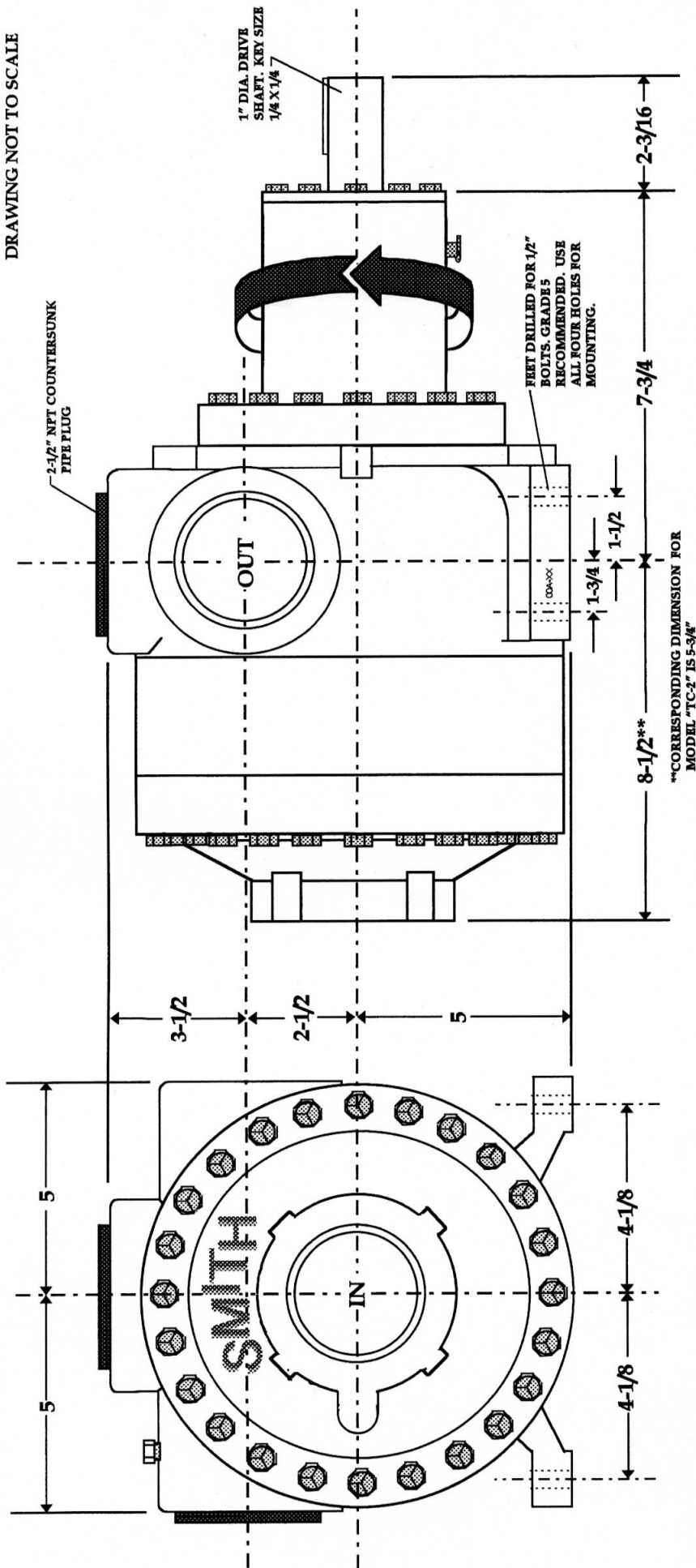
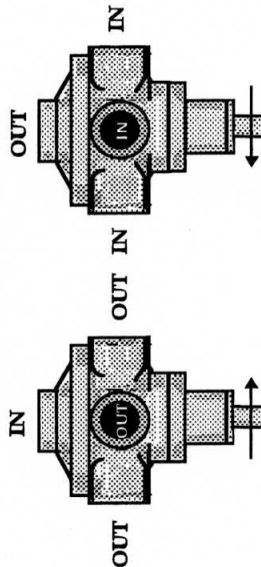


DRAWING NOT TO SCALE



TC-2 and TC-3 Model Types



NOTE: THIS DRAWING IS INTENDED FOR USE WITH MODELS "TC-2", "TC-2 SA", "TC-2 NSA", "TC-3", "TC-3 NS", "TC-3 SA", "TC-3 NSA", AND SPECIAL "S" VERSIONS OF THE ABOVE WITH OR WITHOUT THE "Z" OPTION. ALL PORTS ON THESE MODELS ARE THREADED 2-1/2" FNPT. ALTHOUGH THEY ARE REVERSIBLE, AS SHOWN IN THE SKETCHES TO THE RIGHT, THEIR INSTALLATIONS ARE MOSTLY AS IN THE DRAWING, WITH THE INLET THROUGH THE GEAR END COVER (ESPECIALLY THE "TC-3" MODELS). ABOVE, THIS MODEL TYPE IS RUNNING IN THE USUAL "CLOCKWISE" DIRECTION, AND REQUIRES TWO APPROVED PIPE PLUGS INSTALLED IN THE NON-UTILIZED MAIN HOUSING PORTS. (WITH ONE LESS GEAR HOUSING, THE "TC-2" MODEL TYPE IS 2-3/4" SHORTER THAN THE "TC-3" SHOWN, BUT HAS IDENTICAL MOUNTING DIMENSIONS.)

TWO COUNTERSUNK PIPE PLUGS SIMILAR TO THOSE SHOWN ABOVE, ARE UTILIZED DURING INITIAL FACTORY TESTS, AND AFTERWARD ARE LEFT LOOSELY INSTALLED IN THE HOUSING TO HELP PREVENT ENTRANCE OF MOISTURE AND DEBRIS DURING SHIPMENT AND STORAGE. DO NOT INSTALL THESE PLUGS UNLESS THEY ALLOWED UNDER CURRENT APPLICABLE REGULATIONS. BE SURE TO CAREFULLY READ AND FOLLOW ALL SAFETY CODES AND PRACTICES INVOLVING THE USE OF THIS LIQUID TRANSFER PUMP, ESPECIALLY WHEN USED TO HANDLE FLAMMABLE LIQUIDS, SUCH AS LPG. CONTACT THE FACTORY IF THERE ARE ANY QUESTIONS.

ALL DIMENSIONS IN INCHES TO 2/16 TOLERANCE.

**DIMENSION DRAWING**  
SMITH MODEL TYPES TC-2 AND TC-3

SMITH PRECISION PRODUCTS CO.  
1299 LAWRENCE DRIVE  
NEWBURY PARK, CA 91320

RSS 11-15-97

**DTC-2-3**