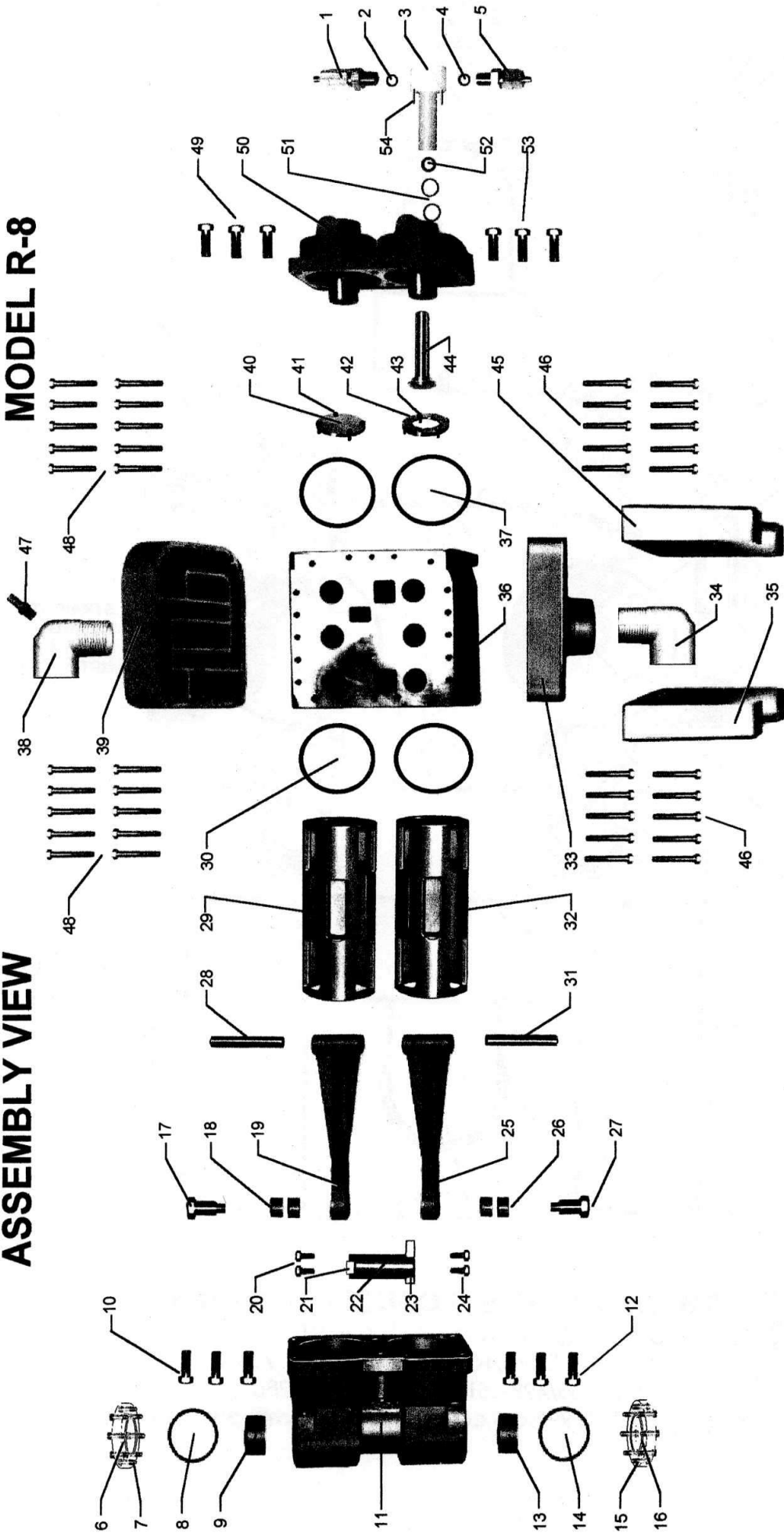


ASSEMBLY VIEW

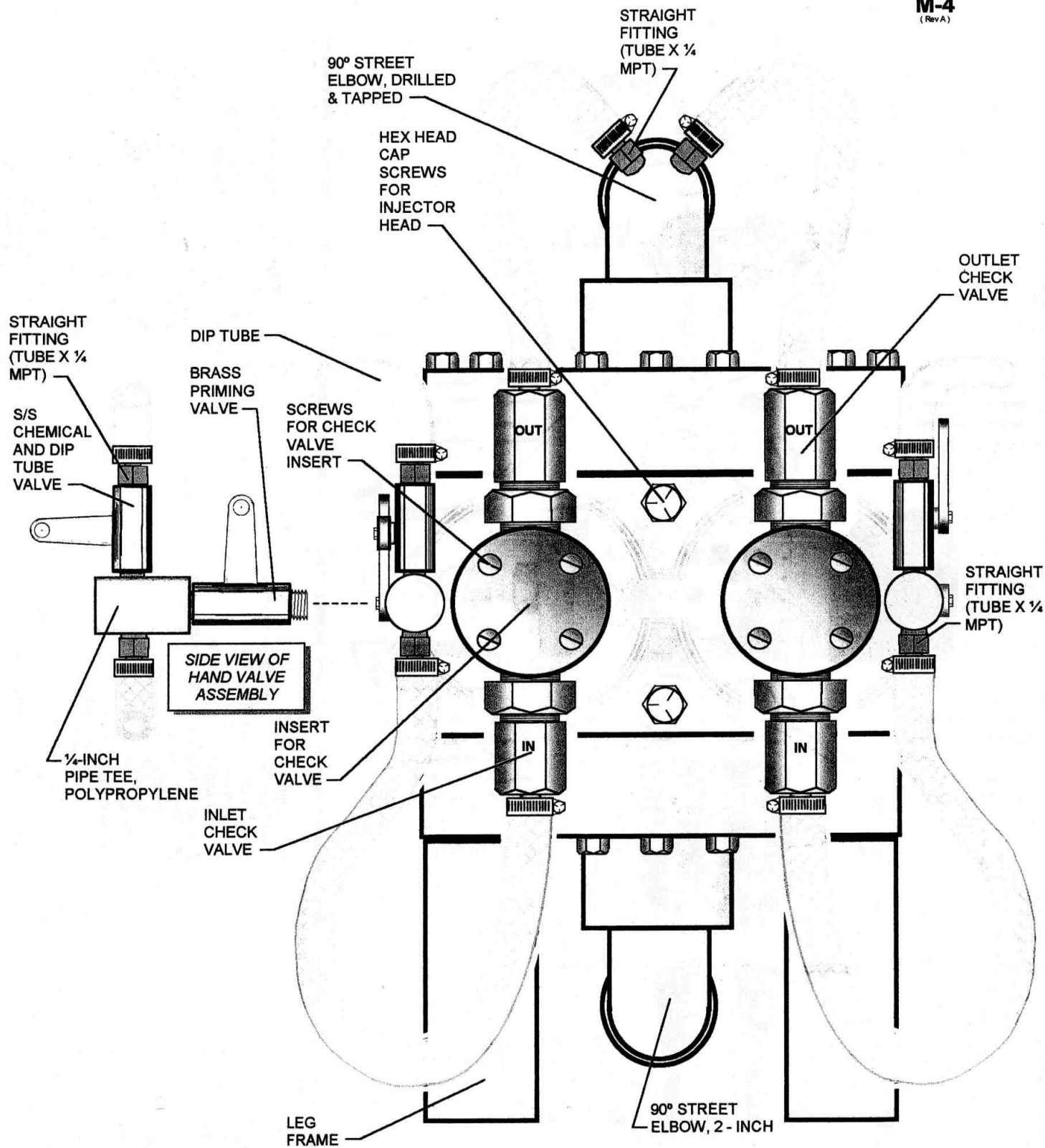
MODEL R-8



- 1 - Double-ball check valve (out) assy.
- 2 - O-ring for check valve
- 3 - Insert for check valve
- 4 - O-ring for check valve
- 5 - Double-ball check valve (in) assy.
- 6 - Plastic window
- 7 - Cap screws for plastic window
- 8 - O-ring for plastic window
- 9 - Crankshaft bushing
- 10 - Cap screws for crankshaft housing
- 11 - Crankshaft housing
- 12 - Cap screws for crankshaft housing
- 13 - Crankshaft bushing
- 14 - O-ring for plastic window
- 15 - Cap screws for plastic window
- 16 - Plastic window
- 17 - Crank throwbolt - left
- 18 - Connecting rod bushings

- 19 - Connecting rod
- 20 - Cap screws for crankshaft extensions
- 21 - Crankshaft extension - left
- 22 - Crankshaft
- 23 - Crankshaft extension - right
- 24 - Cap screws for crankshaft extensions
- 25 - Connecting rod
- 26 - Connecting rod bushings
- 27 - Crank throwbolt - right
- 28 - Water motor piston pin
- 29 - Water motor piston
- 30 - O-ring for cylinder block
- 31 - Water motor piston pin
- 32 - Water motor piston
- 33 - Bottom port cover
- 34 - 90° st. elbow (bottom)
- 35 - Leg frame
- 36 - Cylinder block

- 37 - O-ring for cylinder block
- 38 - 90° st. elbow, drilled and tapped (top)
- 39 - Top port cover
- 40 - Water motor piston cover plate
- 41 - Machine screws for cover plate
- 42 - Injector piston plate
- 43 - Machine screws for piston plate
- 44 - Injector piston assembly
- 45 - Leg frame
- 46 - Cap screws for port cover
- 47 - Straight fitting (tube x 1/4 m.p.t.)
- 48 - Cap screws for port cover
- 49 - Cap screws for injector head
- 50 - Injector head
- 51 - O-rings for o.d. of insert
- 52 - O-ring for injector piston
- 53 - Cap screws for injector head
- 54 - Screw for check valve insert



SMITH PRECISION PRODUCTS COMPANY

P.O. Box 276, Newbury Park, CA 91319 USA
 1299 Lawrence Drive, Newbury Park, CA 91320 USA
 Tel.: 805/498-6616 FAX: 805/499-2867

email: INFO@smithpumps.com web: www.smithpumps.com