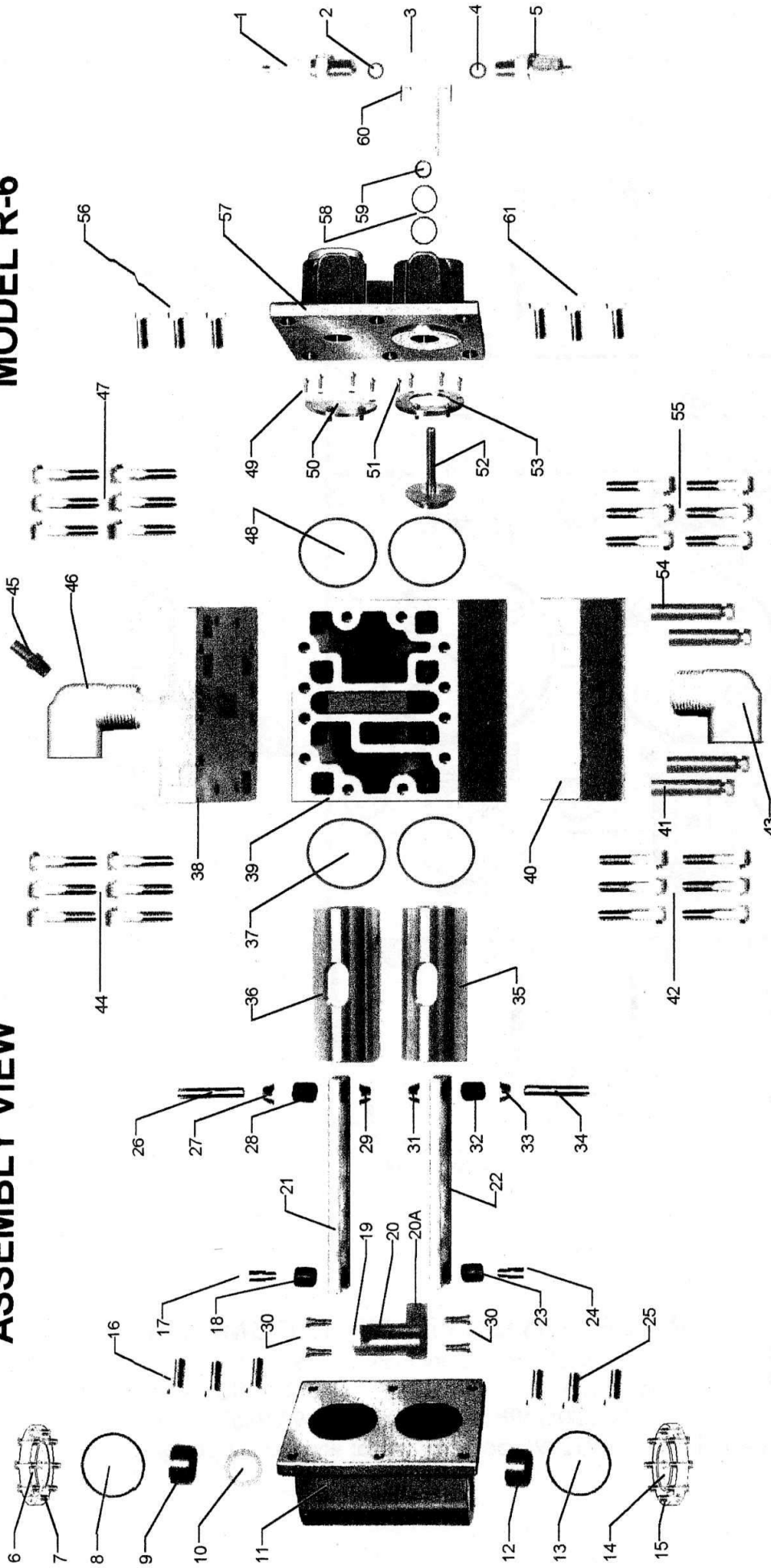


# ASSEMBLY VIEW

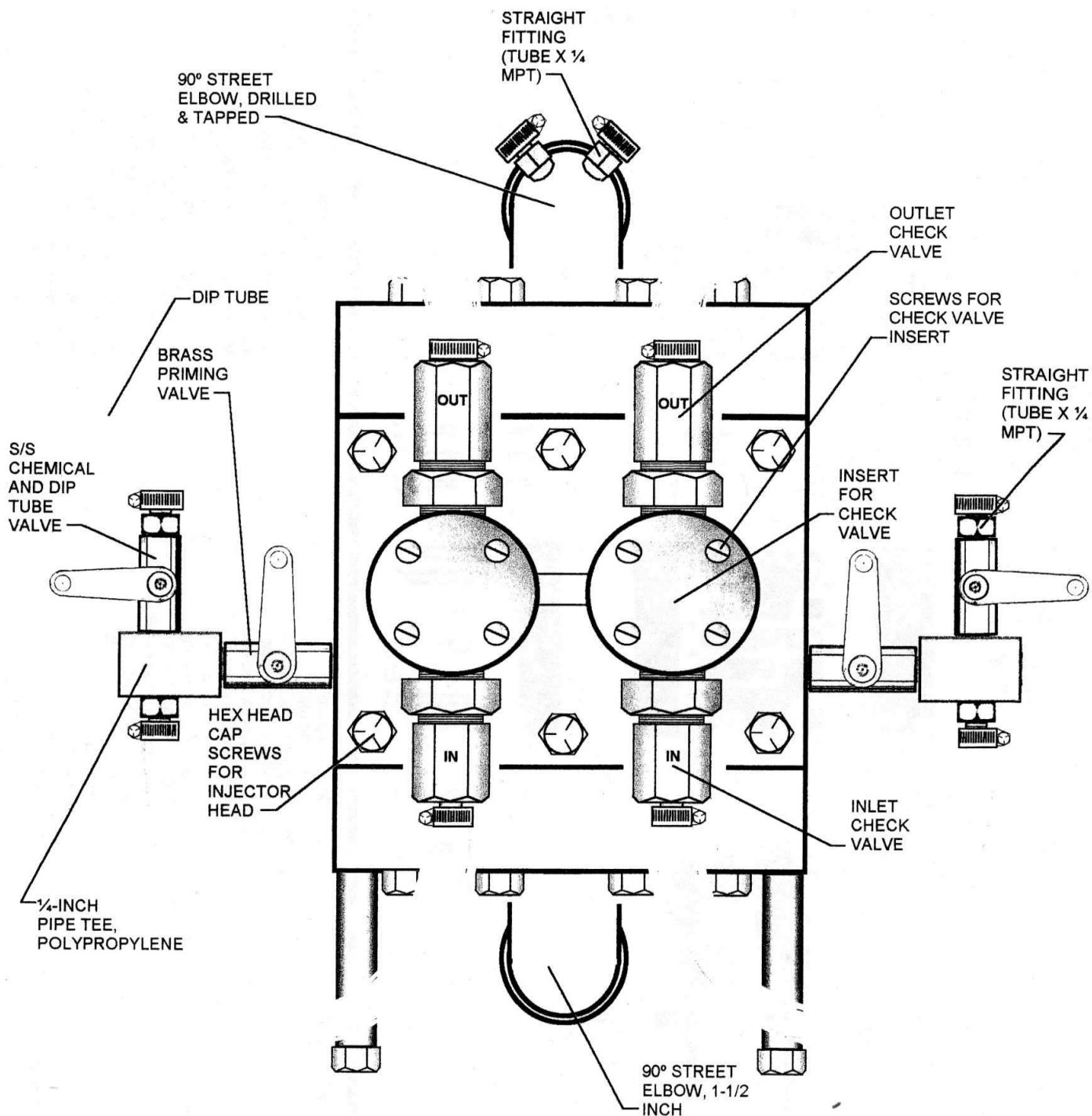
# MODEL R-6



- 1 - Double-ball check valve (out) assy.
- 2 - O-ring for check valve
- 3 - Insert for check valve
- 4 - O-ring for check valve
- 5 - Double-ball check valve (in) assy.
- 6 - Plastic window
- 7 - Cap screws for plastic window
- 8 - O-ring for plastic window
- 9 - Crankshaft bushing
- 10 - Spacer for crankshaft bushings
- 11 - Crankshaft housing
- 12 - Crankshaft bushing
- 13 - O-ring for plastic window
- 14 - Plastic window
- 15 - Cap screws for plastic window
- 16 - Cap screws for crankshaft housing
- 17 - Crank throwbolt - left
- 18 - Connecting rod bushing
- 19 - Crankshaft extension - left
- 20 - Crankshaft
- 20A - Crankshaft extension - right

- 21 - Connecting rod
- 22 - Connecting rod
- 23 - Connecting rod bushing
- 24 - Crank throwbolt - right
- 25 - Cap screws for crankshaft housing
- 26 - Water motor piston pin
- 27 - Connecting rod spacer
- 28 - Connecting rod bushing
- 29 - Connecting rod spacer
- 30 - Cap screws for crankshaft extensions
- 31 - Connecting rod spacer
- 32 - Connecting rod bushing
- 33 - Connecting rod spacer
- 34 - Water motor piston pin
- 35 - Water motor piston
- 36 - Water motor piston
- 37 - O-ring for cylinder block
- 38 - Top port cover
- 39 - Cylinder block
- 40 - Bottom port cover

- 41 - Leg spacers with cap screws for legs
- 42 - Cap screws for port cover
- 43 - 90° st. elbow, 1-1/2 inch (bottom)
- 44 - Cap screws for port cover
- 45 - Straight fitting (tube x 1/4 m. p. t.)
- 46 - 90° st. elbow, drilled & tapped (top)
- 47 - Cap screws for port cover
- 48 - O-ring for cylinder block
- 49 - Machine screws for cover plate
- 50 - Water motor piston cover plate
- 51 - Machine screws for piston plate
- 52 - Injector piston assembly
- 53 - Injector piston plate
- 54 - Leg spacers with cap screws for legs
- 55 - Cap screws for port cover
- 56 - Cap screws for injector head
- 57 - Injector head
- 58 - O-rings for o.d. of insert
- 59 - O-ring for injector piston
- 60 - Screws for check valve insert
- 61 - Cap screws for injector head



**SMITH PRECISION PRODUCTS COMPANY**

P.O. Box 276, Newbury Park, CA 91319 USA  
1299 Lawrence Drive, Newbury Park, CA 91320 USA  
Tel.: 805/498-6616 FAX: 805/499-2867

email: [INFO@smithpumps.com](mailto:INFO@smithpumps.com) web: [www.smithpumps.com](http://www.smithpumps.com)