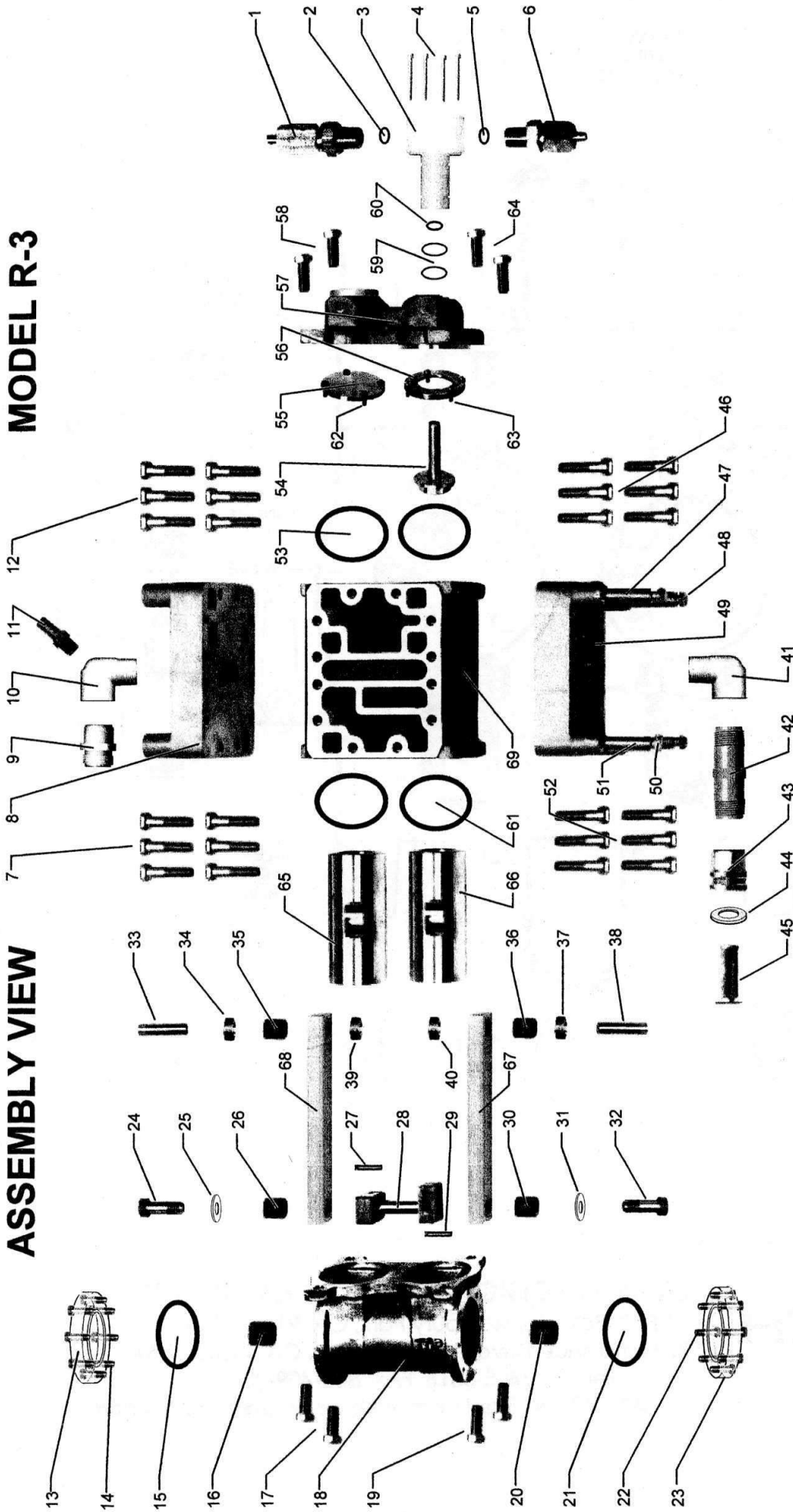


# ASSEMBLY VIEW

# MODEL R-3

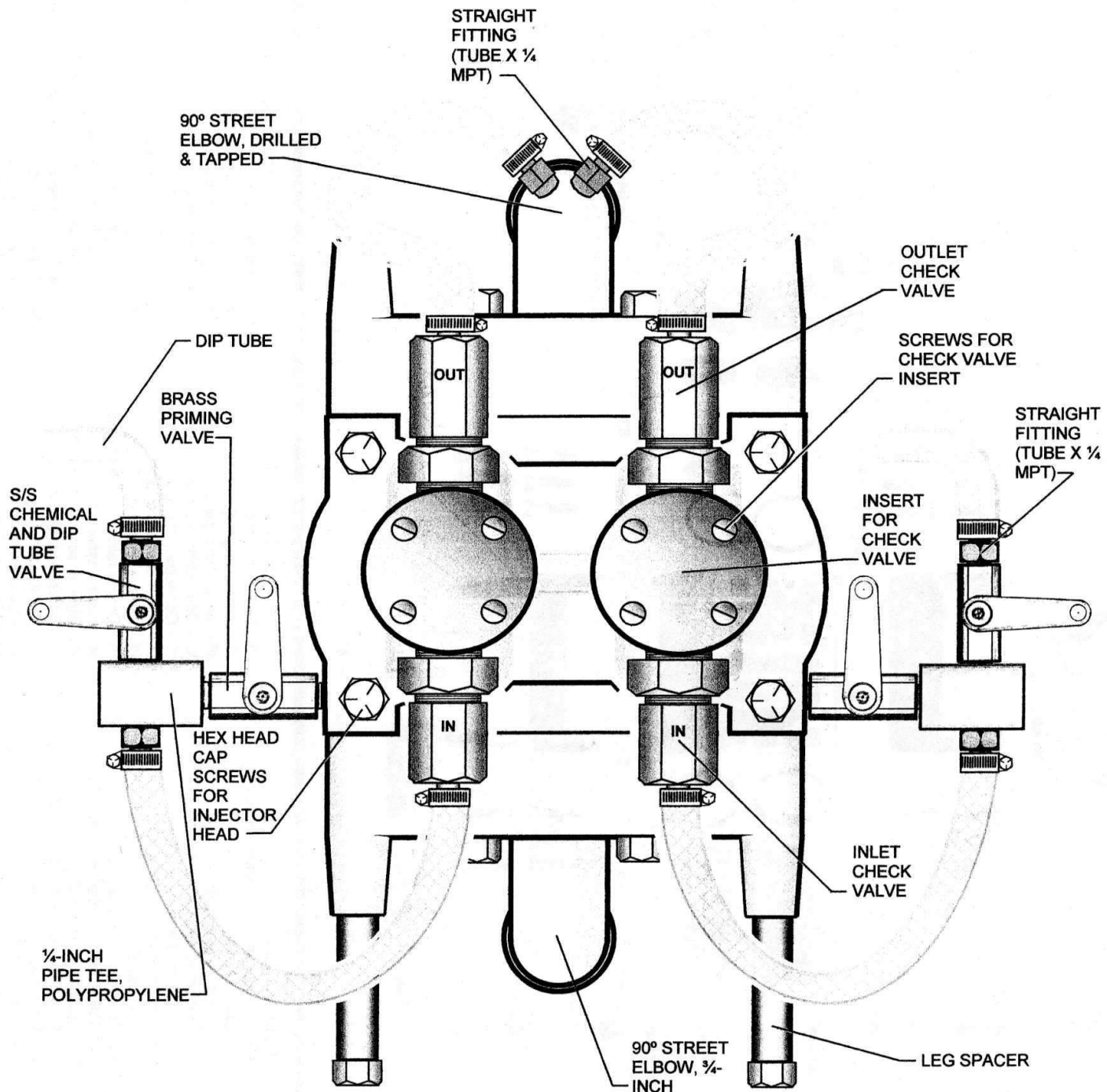


- 1 - Double-ball check valve (out) assy.
- 2 - O-ring for check valve
- 3 - Insert for check valve
- 4 - Screws for check valve insert
- 5 - O-ring for check valve
- 6 - Double-ball check valve (in) assy.
- 7 - Cap screws for port cover
- 8 - Top port cover
- 9 - Male hose adaptor for discharge
- 10 - 90° st. elbow, drilled and tapped (top)
- 11 - Straight fitting (tube x 1/4 m.p.t.)
- 12 - Cap screws for port cover
- 13 - Plastic window
- 14 - Cap screws for plastic window
- 15 - O-ring for plastic window
- 16 - Crankshaft bushing
- 17 - Cap screws for crankshaft housing

- 18 - Crankshaft housing
- 19 - Cap screws for crankshaft housing
- 20 - Crankshaft bushing
- 21 - O-ring for plastic window
- 22 - Cap screws for plastic window
- 23 - Plastic window
- 24 - Crank throwbolt - left
- 25 - Brass washer
- 26 - Connecting rod bushing
- 27 - Rollpin for crankshaft extension
- 28 - Crankshaft assembly
- 29 - Rollpin for crankshaft extension
- 30 - Connecting rod bushing
- 31 - Brass washer
- 32 - Crank throwbolt - right
- 33 - Water motor piston pin
- 34 - Connecting rod spacer

- 35 - Connecting rod bushing
- 36 - Connecting rod spacer
- 37 - Connecting rod bushing
- 38 - Water motor piston pin
- 39 - Connecting rod spacer
- 40 - Connecting rod spacer
- 41 - 90° st. elbow (bottom)
- 42 - PVC pipe nipple
- 43 - Double female swivel for inlet
- 44 - Hose washer
- 45 - Strainer screen
- 46 - Cap screws for port cover
- 47 - Leg spacer
- 48 - Cap screws for legs
- 49 - Bottom port cover
- 50 - Cap screws for legs
- 51 - Leg spacer

- 52 - Cap screws for port cover
- 53 - O-ring for cylinder block
- 54 - Injector piston assembly
- 55 - Water motor piston cover plate
- 56 - Injector piston plate
- 57 - Injector head
- 58 - Cap screws for injector head
- 59 - O-rings for o.d. of insert
- 60 - O-ring for injector piston
- 61 - O-ring for cylinder block
- 62 - Machine screws for cover plate
- 63 - Machine screws for piston plate
- 64 - Cap screws for injector head
- 65 - Water motor piston
- 66 - Water motor piston
- 67 - Connecting rod
- 68 - Connecting rod
- 69 - Cylinder block w / liners



**SMITH PRECISION PRODUCTS COMPANY**

P.O. Box 276, Newbury Park, CA 91319 USA  
1299 Lawrence Drive, Newbury Park, CA 91320 USA  
Tel.: 805/498-6616 FAX: 805/499-2867

email: [INFO@smithpumps.com](mailto:INFO@smithpumps.com) web: [www.smithpumps.com](http://www.smithpumps.com)