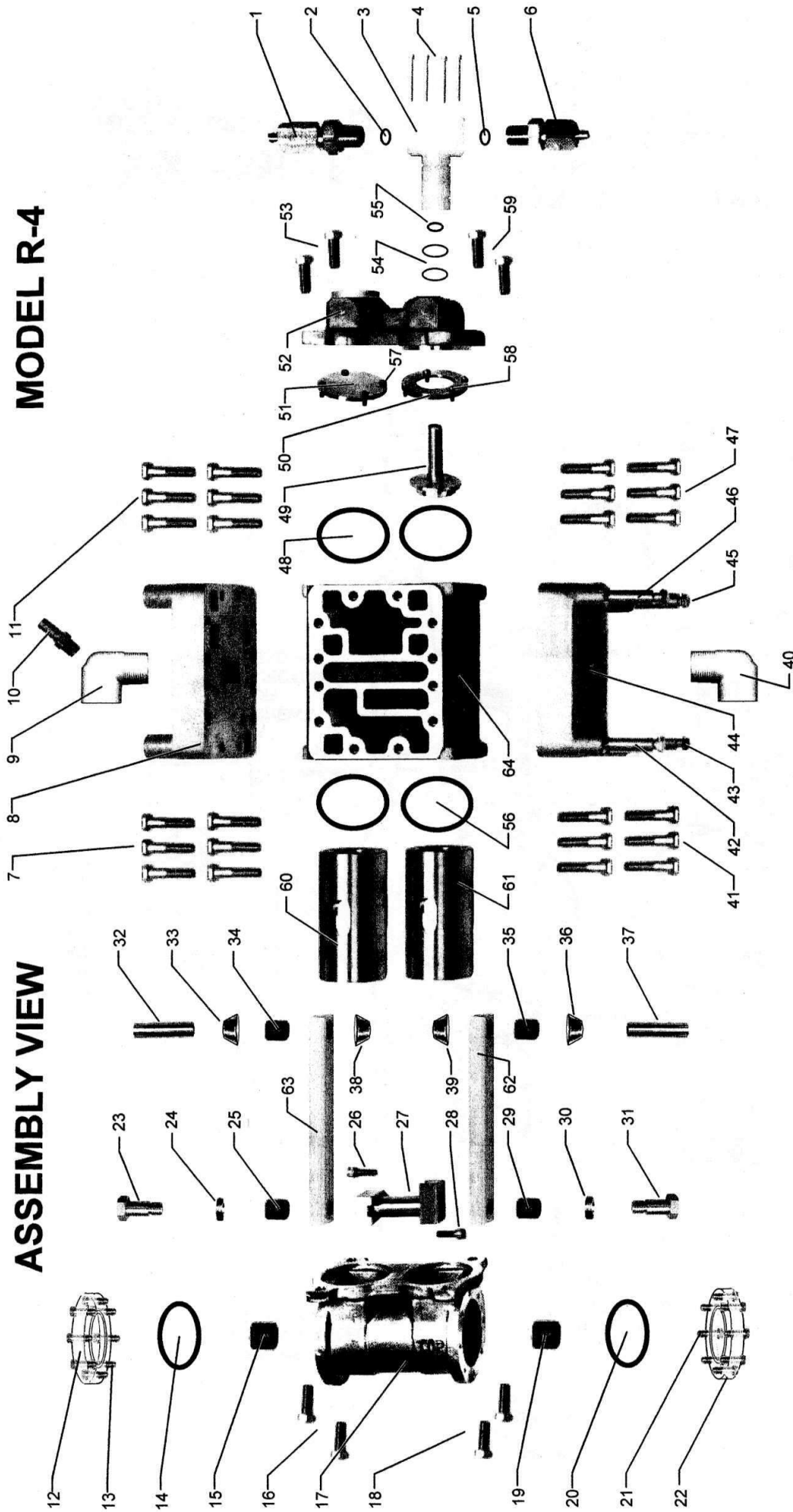


ASSEMBLY VIEW

MODEL R-4

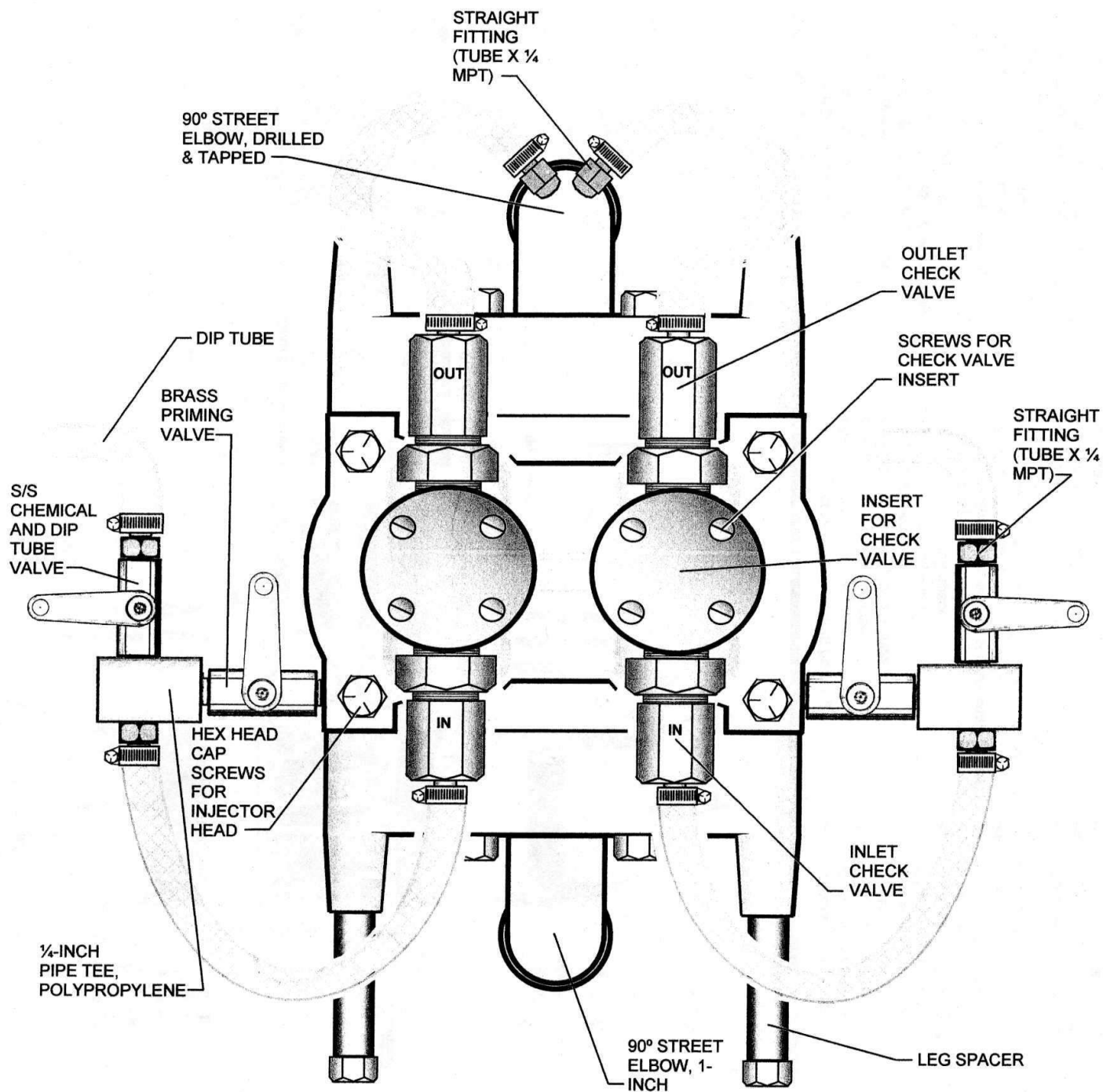


- 1 - Double-ball check valve (out) Assy.
- 2 - O-ring for check valve
- 3 - Insert for check valve
- 4 - Screws for check valve insert
- 5 - O-ring for check valve
- 6 - Double-ball check valve (in) Assy.
- 7 - Cap screws for port cover
- 8 - Top port cover
- 9 - 90° st. elbow, drilled and tapped (top)
- 10 - Straight fitting (tube x 1/4 m.p.t.)
- 11 - Cap screws for port cover
- 12 - Plastic window
- 13 - Cap screws for plastic window
- 14 - O-ring for plastic window
- 15 - Crankshaft bushing
- 16 - Cap screws for crankshaft housing
- 17 - Crankshaft housing

- 18 - Cap screws for crankshaft housing
- 19 - Crankshaft bushing
- 20 - O-ring for plastic window
- 21 - Cap screws for plastic window
- 22 - Plastic window
- 23 - Crank throwbolt - left
- 24 - Crank throwbolt spacer
- 25 - Connecting rod bushing
- 26 - Socket head cap screw for crankshaft extension
- 27 - Crankshaft assembly
- 28 - Socket head cap screw for crankshaft extension
- 29 - Connecting rod bushing
- 30 - Crank throwbolt spacer
- 31 - Crank throwbolt - right
- 32 - Water motor piston pin
- 33 - Connecting rod spacer
- 34 - Connecting rod bushing

- 35 - Connecting rod bushing
- 36 - Connecting rod spacer
- 37 - Water motor piston pin
- 38 - Connecting rod spacer
- 39 - Connecting rod spacer
- 40 - 90° st. elbow (bottom)
- 41 - Cap screws for port cover
- 42 - Leg spacer
- 43 - Cap screws for legs
- 44 - Bottom port cover
- 45 - Cap screws for legs
- 46 - Leg spacer
- 47 - Cap screws for port cover
- 48 - O-ring for cylinder block
- 49 - Injector piston assembly
- 50 - Injector piston plate
- 51 - Water motor piston cover plate

- 52 - Injector head
- 53 - Cap screws for injector head
- 54 - O-rings for o.d. of insert
- 55 - O-ring for injector piston
- 56 - O-ring for cylinder block
- 57 - Machine screws for cover plate
- 58 - Machine screws for piston plate
- 59 - Cap screws for injector head
- 60 - Water motor piston
- 61 - Water motor piston
- 62 - Connecting rod
- 63 - Connecting rod
- 64 - Cylinder block



SMITH PRECISION PRODUCTS COMPANY

P.O. Box 276, Newbury Park, CA 91319 USA
1299 Lawrence Drive, Newbury Park, CA 91320 USA
Tel.: 805/498-6616 FAX: 805/499-2867

email: INFO@smithpumps.com web: www.smithpumps.com