

# Low Rpm Truck Pumps

Flow Rates of 35– 100 GPM (379 – 946 LPM)



TC-3

- Our low RPM truck pumps are designed for operation by power take off or by engine
- 4 Ports available for ease of pipework installation (3 ports for TC-1044H)
- Can be mounted sideways or upside down
- Available in flanged version
- Reversible

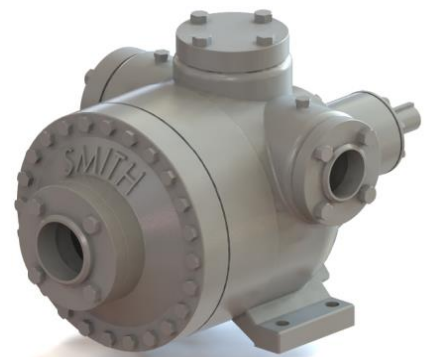
MODEL	FLOW RATE (Assume 0 psi differential pressure)	PUMP INLET SIZE	PUMP OUTLET SIZE	USUAL SIZE OF TANK LIQUID OUTLET	NPSH <sub>r</sub>	FLANGE
TC-1044H MAX 900 RPM	35 GPM (133 LPM) @ 900 RPM	1- ½"	1- ½"	1- ½" – 2"	1 ft.	NO
TC-2 MAX 500 RPM	50 GPM (190 LPM) @ 500 RPM	2- ½"	2- ½"	2-3"	1 ft.	NO
TC-2F MAX 500 RPM	50 GPM (190 LPM) @ 500 RPM	2- ½"	2"	2-3"	1 ft.	YES
TC-3 MAX 500 RPM	100 GPM (380 LPM) @ 500 RPM	2- ½"	2- ½"	3"	1 ft.	NO
TC-3F MAX 500 RPM	100 GPM (380 LPM) @ 500 RPM	2- ½"	2"	3"	1 ft.	YES



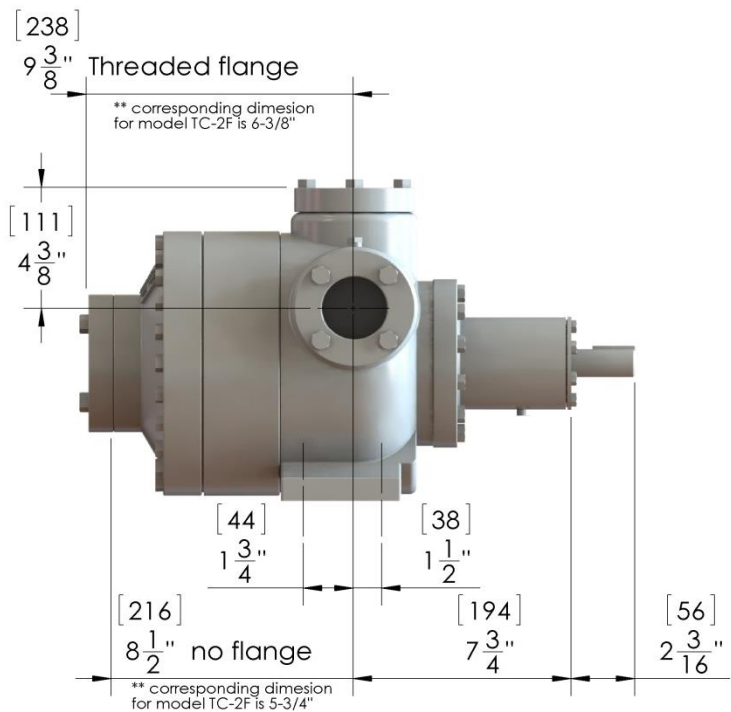
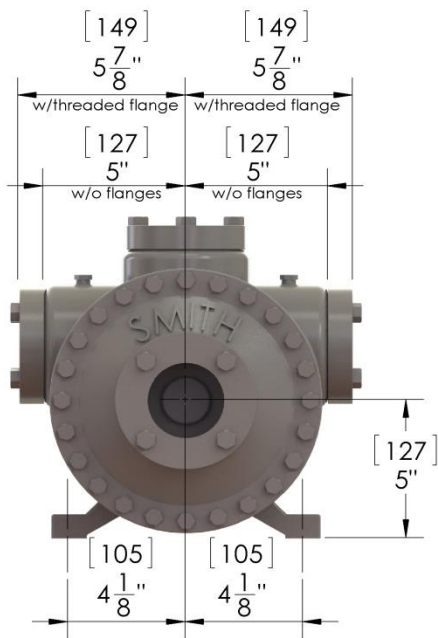
TC-3 Threaded Housing



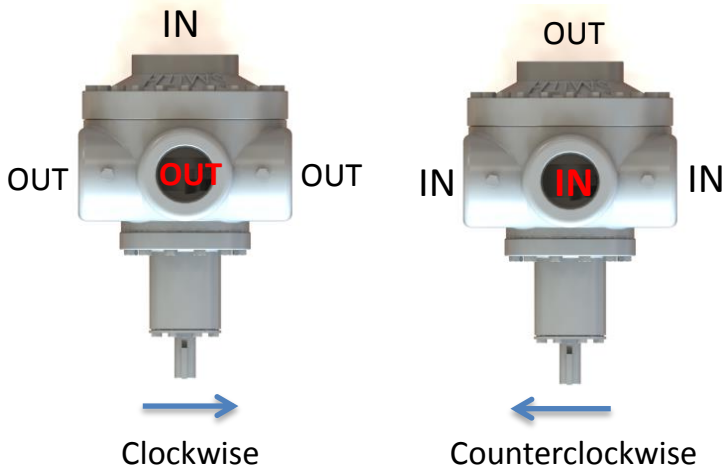
TC-3F Threaded Flange



TC-3F Butt-Weld Flange



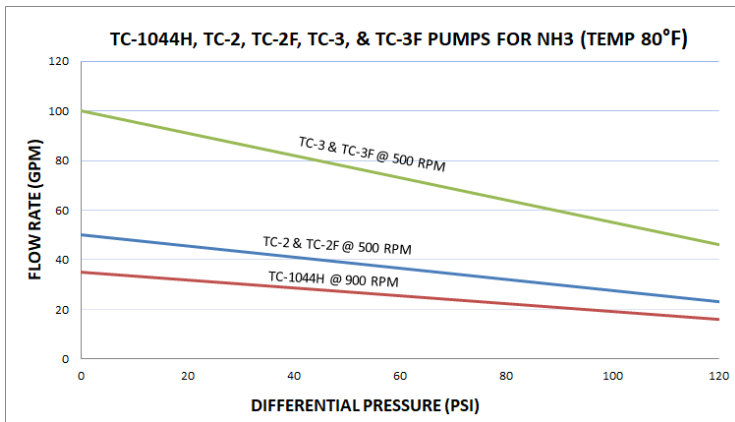
PUMP SHAFT DIAMETER = 1" [25]  
 PUMP DRIVE SHAFT KEY SIZE 1/4" [6] X 1/4" [6]  
 PUMP DIMENSIONS ARE FOR TC-2, TC-2F, TC-3, TC-3F PUMPS,  
 2-1/2" NPT INLET AND OUTLET W/O FLANGES, 2" INLET AND  
 OUTLET WITH FLANGES  
 FLANGED UNITS INCLUDE BLIND FLANGES FOR UNUSED PORTS  
 \* ALL DIMENSIONS ±1/16 IN INCHES, [ ] DENOTES MM  
 \*\*FOR A MORE DETAILED DRAWING, OR FOR TC-1044H  
 DRAWING, PLEASE VISIT SMITHPUMPS.COM



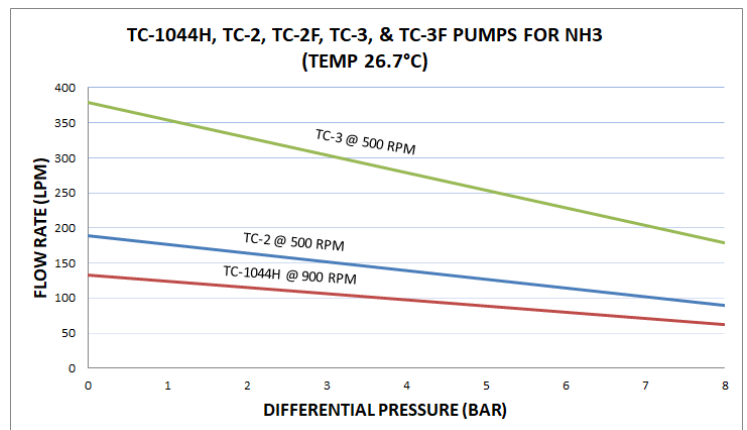
NOTE: ONE OUTLET MAY BE USED WITH 2 BLIND FLANGES INSTALLED ON UNUSED OUTLET PORTS. THE TC-1044H DOES NOT CONTAIN A TOP PORT.

Model	Weight (Pump only)
TC-1044H	50 lbs (23 kg)
TC-2, TC-2F	100 lbs (45 kg)
TC-3, TC-3F	135 lbs (62 kg)

\* Weight varies depending on motor, contact factory for specific weight



Performance curves above are based on 80°F. Actual pump output will be approximately 5-10% greater than predicted above.



For other liquid services or for more information on predicted pump output, please visit our pump performance calculator at [smithpumps.com](http://smithpumps.com) or contact us.